

How you can reach us.
 Support: (602) 264-5913
 Sales: (800) 677-1120
 FAX: (602) 279-3633
 E-mail sales and support at:
 sales@labsysgrp.com
 support@labsysgrp.com
 Visit us online at:
 www.labsysgrp.com

RETURN SERVICE REQUESTED

PRSR STD
 U.S. POSTAGE
PAID
 PHOENIX, AZ
 PERMIT NO. 5737



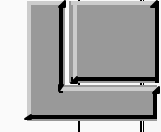
2003 Conference Brochure Inside!

Register today! Early discount expires 4/30/03.



Version 6 Preview!

Introduction to the new "Case Entry."



April 2003

Connections

The Newsletter for Lab Manager Users



Letter from the President

Lab Manager Version 6 Preview

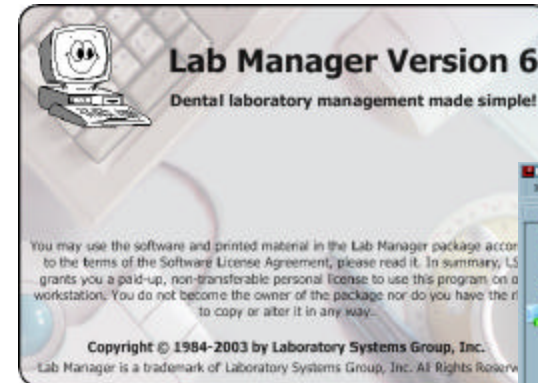
The greatly anticipated **Lab Manager Version 6** is nearly ready to begin beta testing and I thought that I would dedicate this and the next issue of our Connections newsletter to it. In this issue, I will show you the **Main Menu** and a few of the new case entry screens.

changed, even the data can be customized to meet special needs.

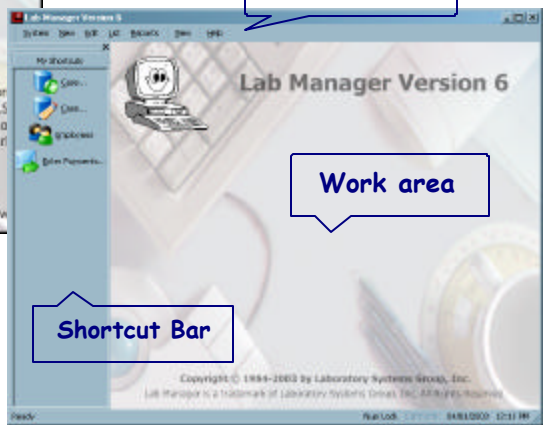
With day to day use, **Version 6** will start faster and will go directly to the Main Menu after displaying the Splash Screen for a brief moment. The "Enter Today's Date" screen is gone. Instead, you can change the Lab Manager date from the Main Menu if you don't want to use the default date set by the computers clock.

Also note that **Version 6** has a fresh Windows XP look. **Version 6** will support this fresh look in Windows 98 and above. This means you don't have to have Windows XP to enjoy this new look and feel.

Splash Screen



Main Menu



The moment you start the program, you will see a difference. The Lab Manager graphic has been changed to a more high-tech look to go along with the fact that **Version 6** incorporates all of the latest technologies. For one thing, **Version 6** is highly customizable. Most everything in **Version 6** can be designed or modified by the user. Reports can be modified, menus can be

The **Version 6** Main Menu is much different from all other versions of Lab Manager in that it doesn't have a bunch

of “menu” buttons to click on. Instead, like the Microsoft Outlook screen, Lab Manager will have a shortcut bar on the left side of the screen to allow you to launch your favorite Lab Manager reports and data entry screens with a single click and a Menu Bar at the top of the screen where you can access ALL reports and data entry screens. This is an important point; everything is available from the Menu Bar at the top of the screen.

Menu Bar

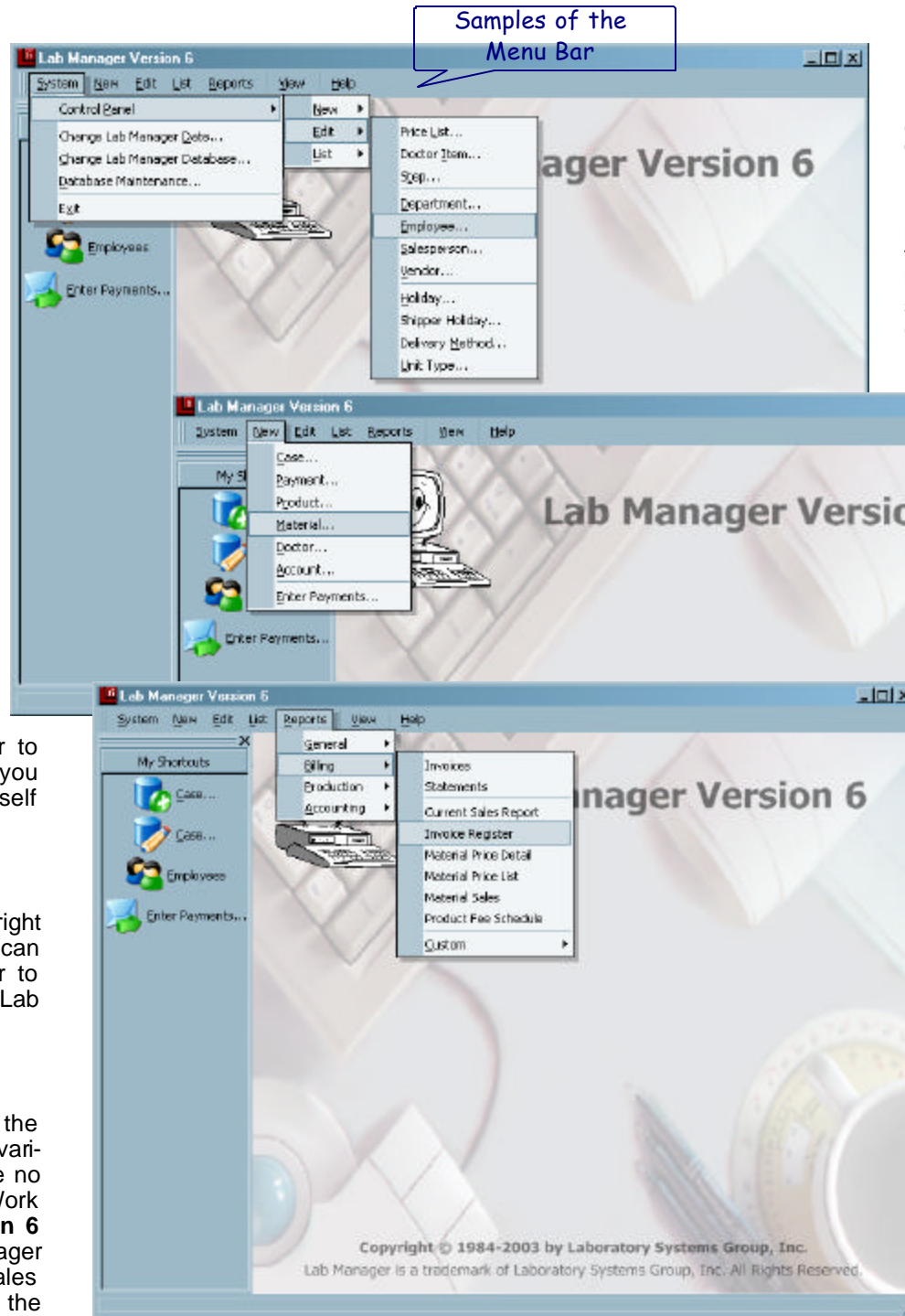
This Menu Bar allows you to launch any Lab Manager report or data entry screen from anywhere in Lab Manager so you no longer need to return to the Main Menu to do something else. For example, if you are entering a case and a doctor calls with a question about his account, you simply move the mouse up to the Menu Bar and select Edit and then Account and you now have that doctor’s information on the screen. There, you could look up payments, or previous invoices in order to answer the doctor’s questions. When you close the extra screens, you find yourself back on the case where you left off.

Shortcut Bar

You can customize this Shortcut Bar by right clicking and choosing Customize. You can create up to 6 tabs in the Shortcut Bar to help you group or better organize your Lab Manager short cuts.

Main Menu’s Work Area

The largest area in the Main Menu is the area in which Lab Manager displays the various data entry screens. When there are no data entry screens opened up in the Work Area, Lab Manager displays its **Version 6** graphic. On top of the graphic, Lab Manager can display useful information about sales and production data customizable by the user.



Case Entry

Entering cases is faster and more convenient because of a new “Quick” case entry screen. This new Quick entry screen allows the user to define the most common pieces of information entered from the prescription. When the OK button is pressed, that data is stored and placed onto the larger Case screen placing the cursor in the product entry area.

The Quick case entry screen can be customized by simply right clicking on the form and then selecting the fields you want to add from the popup menu as shown to the right. Once the form has been customized, Lab Manager will remember the changes and they will appear on all workstations on the network from that point forward.

All date fields will have a more powerful dropdown calendar than the one used in Version 5, to make selecting dates easier. This calendar knows about special dates and holidays and will warn you if you try to select one

of those dates. Special dates can be color coded and hovering the mouse over a date will display a message describing the reason that date is not available.

Date fields also have spin buttons to allow you to quickly increment or decrement the date shown. These spin buttons will also honor your special dates.

In our next issue of the Connections Newsletter, I will show you what the data entry screens look like and discuss how they differ from previous versions of Lab Manager.

