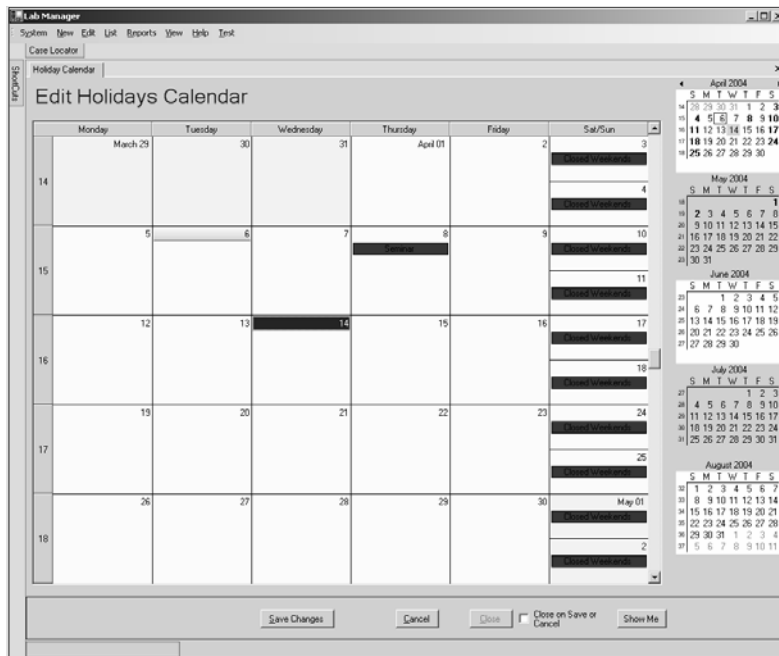


How you can reach us.
Support: (602) 264-5913
Sales: (800) 677-1120
FAX: (602) 279-3633
E-mail sales and support at:
sales@labsysgrp.com
support@labsysgrp.com
Visit us online at:
www.labsysgrp.com

SNEEK PEEK! (cont.)

New Version 6 Calendar

The screen to the right shows an actual screen shot of the new **Lab Manager Calendar** window. Unlike Version 5, Version 6 tracks both user holidays and shipper holidays. This provides valuable information about how long it will take to ship an item back to the doctor.



Did You Know?

Did you know there is a lot more on the **Lab Manager** installation CD than just **Lab Manager**? In addition to a bunch of drivers, tools, and technical stuff, there are some surprises you might want to look at.

Training Videos on CD

On all of our installation CDs, dating back to early 2003, there are some training videos that will play right on your computer screen. All you need are some speakers, if you want to hear the person speaking. To watch a video, simply insert the **Lab Manager** CD labeled version **5.00.72v** ("v" for video). Wait for the installation to begin and as soon as you have the option, CANCEL the installation and return to the **Windows** Desktop.

Next, open up "**My Computer**" and locate the CD-ROM drive. It might have the **Lab Manager** name next to it. Open the drive by right clicking on it and then left click on Explore to see several folders. Locate the folder called **Videos** and double click on it to open it. Finally, you should see the videos. The longest and most complete video is called **Imdemo.exe**. To play a video, simply double click on the desired video and wait. It may take several seconds to load and start the video. Once the video starts, you will be able to play, stop, rewind and fast forward the video just like a VCR.

Complete User Manual

Also on the CD is a complete 149 page **Lab Manager User manual** in both **PDF** and **Microsoft Word** format. You can use either file to read and even print the complete user manual. There are other useful documents in the same folder. To find these folders, follow the steps listed earlier to get to the videos and open the **DOCS** folder on the CD.

Free Office Software

In the "**OpenOffice**" folder on the CD you will find a single file that can be used to install **Open Office**; a complete office suite of programs like **Microsoft Office**.

Open Office has received rave reviews and is an excellent alternative to **Microsoft Office**. **Open Office** includes a word processor that can read and write **Microsoft Word** documents, a spreadsheet program compatible with **Microsoft Excel**, a drawing program that is much better than the one supplied by Microsoft, and a presentation program similar to **Power Point**.

If you are looking for a powerful office suite of programs and can't afford the price for the Microsoft suite, try out the **Open Office** suite of programs by double clicking on the file in the "**OpenOffice**" folder on the CD and follow the prompts. You will like what you see!

Are you using a version of Lab Manager older than version 5.00.72?

To determine your version of **Lab Manager**, go to **Lab Manager's Main Menu**. In the lower left corner of the screen find the box that contains, in large letters, the words **Lab Manager, Laboratory Systems Group, Inc., 32 Bit and the Version #**.



If your version is less than 5.00.72, then consider updating it. Many improvements, fixes, and additions have been made to **Lab Manager** that make this update very worthwhile.

What will 05.00.72 cost?

If you are using **Lab Manager 99** or **Lab Manager 2000**, the update is **FREE**. If you are using LM 97 or LM DOS, you will need to contact the sales department at (800) 677-1120 for pricing.

Note: This is not the brand new Lab Manager Version 6 that is due to be released this summer. This current Version 5 update was released in 2002. You will need to have the 05.00.72 to upgrade to Version 6.

Two Ways to get the Version 5.00.72 update.

Method 1: Download the update. Go to our website at www.labsysgrp.com and click on

Files Available For Download				
Description	Date	Version	Size	
<i>Program Updates</i>				
Lab Manager™ for Windows 32 BIT DEMO	11-20-01	05.00.72	17.4 K	
Lab Manager™ 2000 for Windows	11-20-01	05.00.72	3 M	
Lab Manager™ 97 - 16 Bit			1.31 M	
Lab Manager™ DOS 16.05 Patch			192 K	
<i>Touch Screen Drivers</i>				

the **Support** button on the left side of the screen. Select **Lab Manager 2000 for Windows** in the table. See example below. Follow the prompts until finished. We recommend that you run the update instead of saving it to your hard drive, however, either way works.

Method 2: Order an update CD from our sales department. Getting the CD has advantages over downloading. The CD has the updated Lab Manager help files, manuals, videos, extra drivers, and the Open Office product described on page one. If you order the CD, keep in mind that the update is free, however, we do charge a \$10 fee to cover the costs of making the CD and to help cover shipping.

To order your update, call our sales department at **1-800-677-1120** and ask for the Lab Manager 2000 update on CD.



Conference Update

The sales department has received many calls regarding the next User's Conference. A decision was made to postpone booking the conference until Lab Manager Version 6 is released and in the hands of our users. We have learned from past experience, that you simply cannot schedule programming projects as easily as a crown or bridge.

Lab Manager Version 6 will be released in stages, starting with the Billing and Production Modules some time this summer. We anticipate a 2004 Winter or 2005 Spring conference.

Rest assured, we will publish the conference dates in the newsletter and through a special mailing, months in advance to allow ample time to make travel arrangements.

SNEEK PEEK!

Lab Manager Version 6

As of this date, **Lab Manager Version 6** will be released, in stages, starting with the **Billing and Production Modules** this summer.

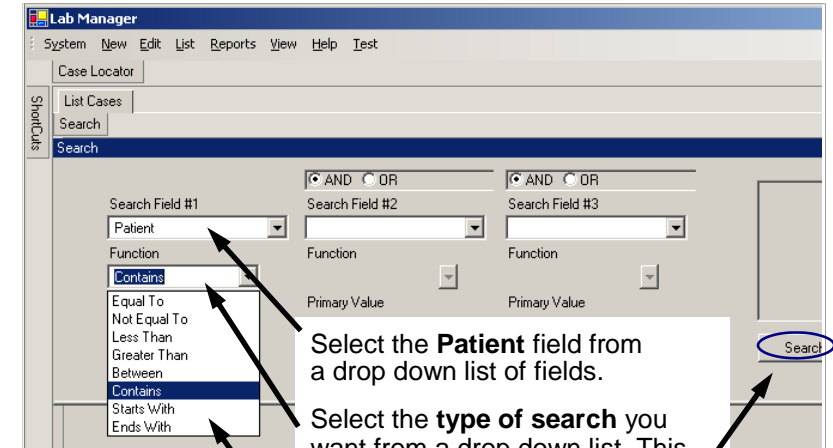
Version 6 incorporates a brand new and very powerful **search function** used to locate **EVERYTHING** from cases to accounts, products, materials, etc.

Search on:

- Any field or fields
- Use several types of searches
- Combining both "and" and "or" functionality.

Case Search by Patient Example

(actual Version 6 screen shot)



Select the **Patient** field from a drop down list of fields.

Select the **type of search** you want from a drop down list. This example uses **Contains**.

Type in the **Patient Name** to search for into **Value** field (hidden under drop down list.)

Click on the **Search** button to view the list of cases.

Case Search by Date and Doctor Example

(actual Version 6 screen shot)

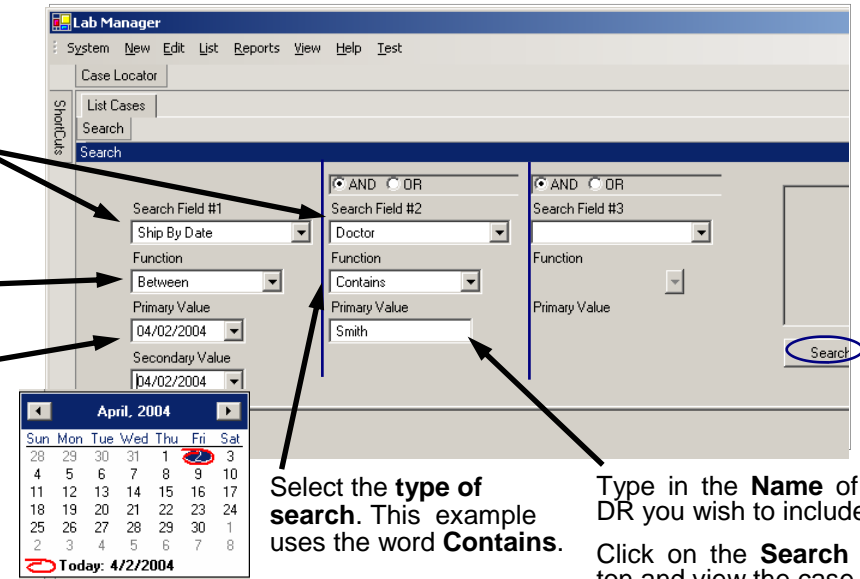
Select **Ship by Date** from drop down list (Field #1) **and Doctor** (Field #2) from the drop down list.

Select the type of search. In this example we used **Between**.

Type in or select a **Starting Date**.

Tip: The button in the date field pops up a calendar.

Type in or select an **Ending Date**.



Select the **type of search**. This example uses the word **Contains**.

Type in the **Name** of the DR you wish to include.

Click on the **Search** button and view the case list.

► Any number of fields can be searched in this way to make for a very powerful search.