

How to make Lab Manager work on a computer with more than 512 Meg. of RAM.

Warning: An error making these changes can make your computer inoperable.

1. Click on **Start** Button
2. Click on **Control Panel** (Figure 1)
3. Click on the **System** icon (if necessary, switch to "Classic View") (Figure 2)
4. Click on the **Advanced Tab** (Figure 3)
5. In the Startup and Recovery area, click on **Settings** (Figure 4)
6. Click on the **Edit** button to edit the "Startup options file manually." (Figure 5)
7. Notepad will open (Figure 6). Locate the line that is similar to the following;
8. **multi(O)disk(O)partition(1)\WINNT="Windows XP Professional"**
9. Duplicate this line (using copy and paste) so that you have two of them, one above the other like the example below and then change the second line in two ways. 1) Change the Windows XP name and 2) Add a space at the end of the line followed by **"/maxmem=512"** as shown below.
multi(O)disk(O)partition(1)\WINNT="Windows XP Professional"
multi(O)disk(O)partition(1)\WINNT="Windows XP Professional 512Mem" /maxmem=512
10. Save the file by clicking on **File** and then on **Save**.
11. **Restart** the computer to implement the changes.

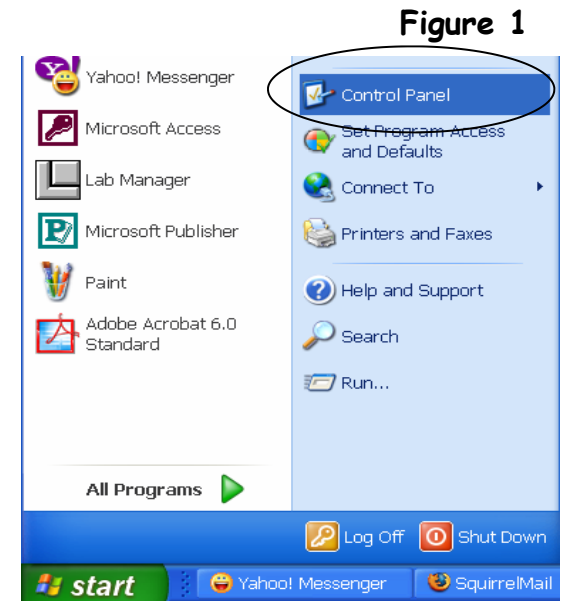


Figure 1

Each time the computer starts up it will ask which Windows you want to use. To operate Lab Manager, choose the one that includes the "512Mem" text. To start the computer using the original Windows configuration, choose the one without the 512Mem text. Removing the additional line will put the computer back to the way it was (should you decide to do so).

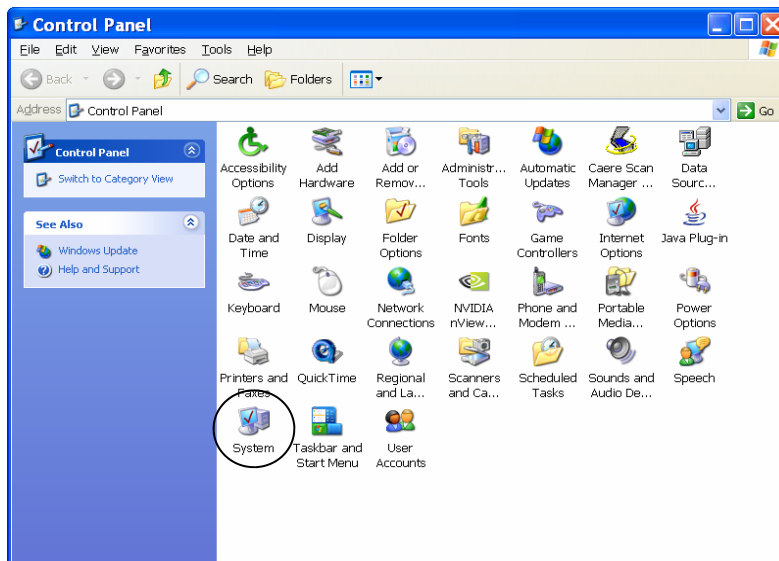


Figure 2

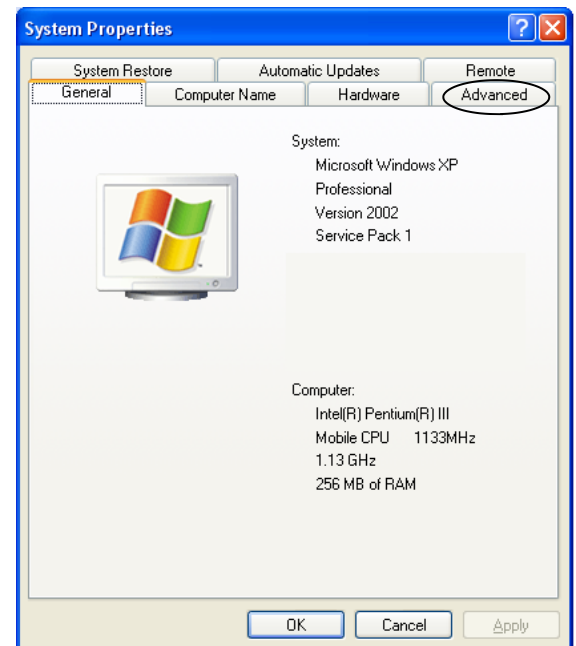


Figure 3

Figure 4

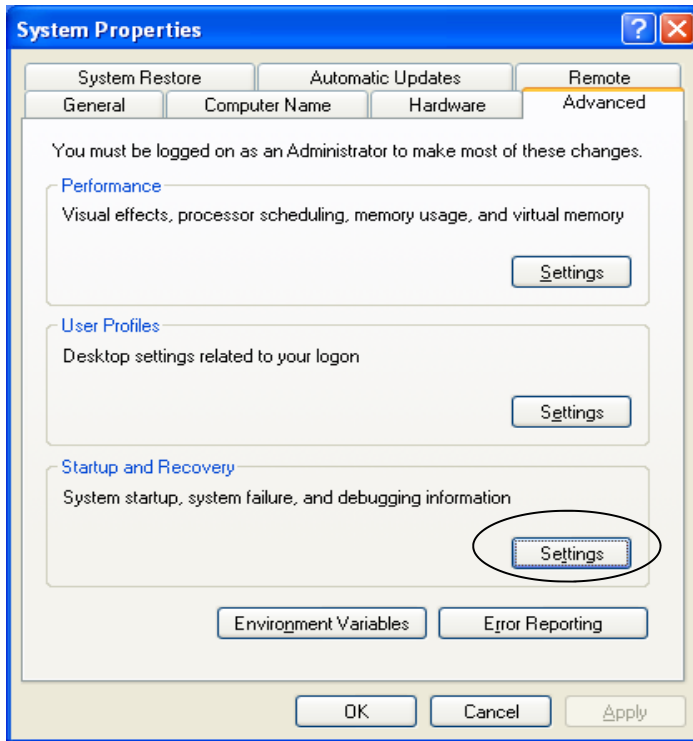


Figure 5

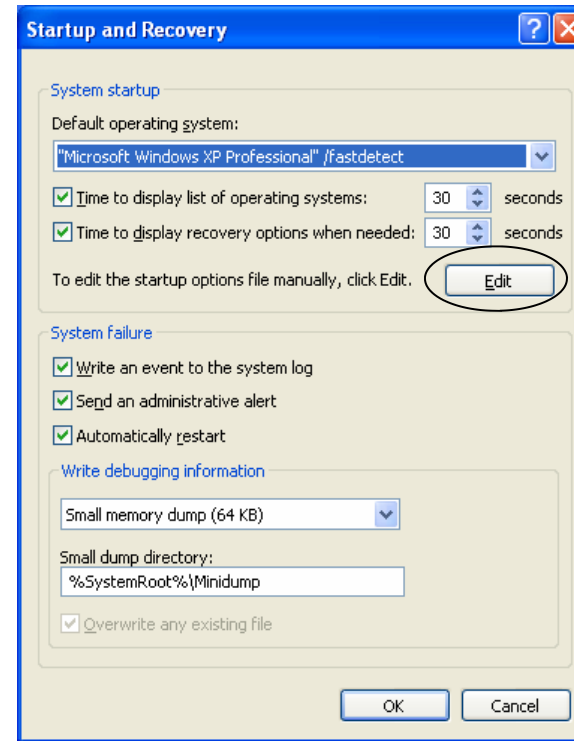


Figure 6

