

Speeding up Lab Manager™ in Windows XP

The following describes how to make Lab Manager run faster in Windows XP. This does not apply to any other version of Windows.

1. Click on the **Start** button and then click on **Control Panel** as shown in Figure 1.
2. Click on **Performance and Maintenance** as shown in Figure 2. **NOTE:** If you can't see this selection, your computer might be set to **Classic View**. To change to **Category View**, click here.
3. Click on **Adjust Visual Effects** as shown in Figure 3.
4. Click on the **Advanced** Tab as shown in Figure 4.
5. Click on **Background services** as shown in Figure 4
6. Click on **Apply** and close all of the windows you opened.
7. **Restart** your computer and it will operate Lab Manager many times faster.

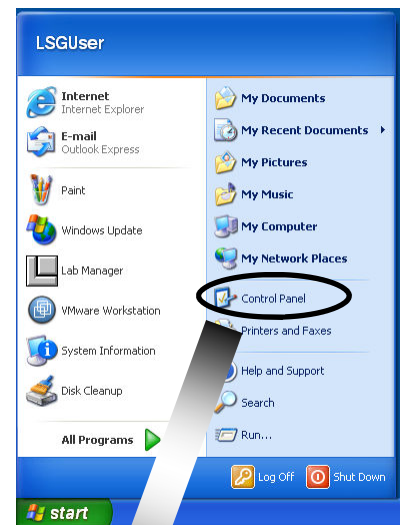


Figure 1

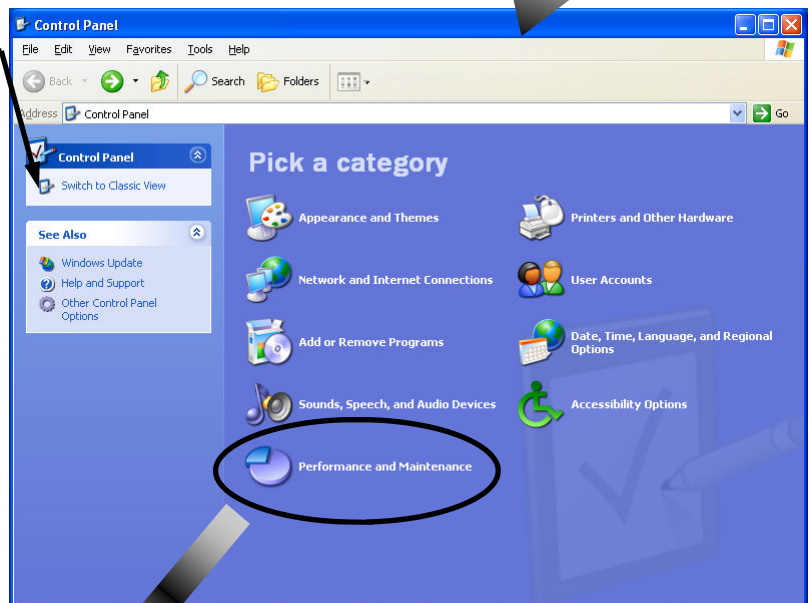


Figure 2

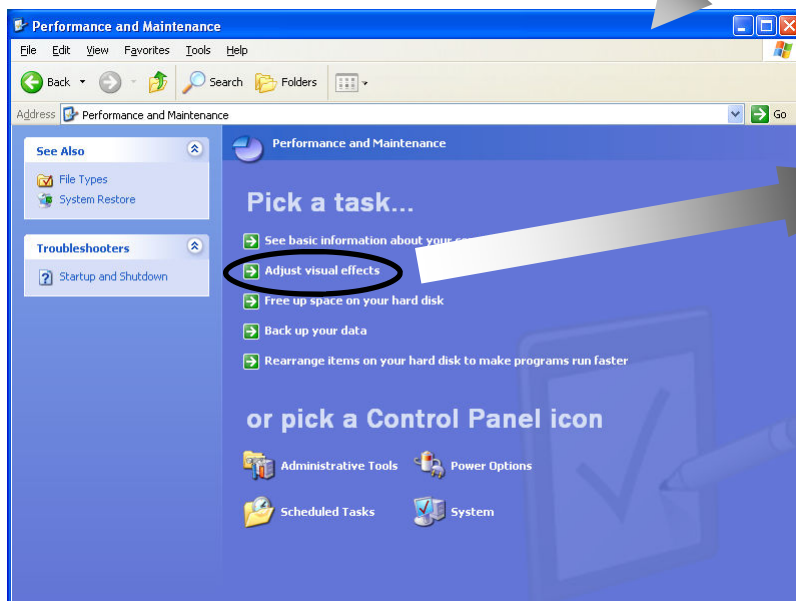


Figure 3

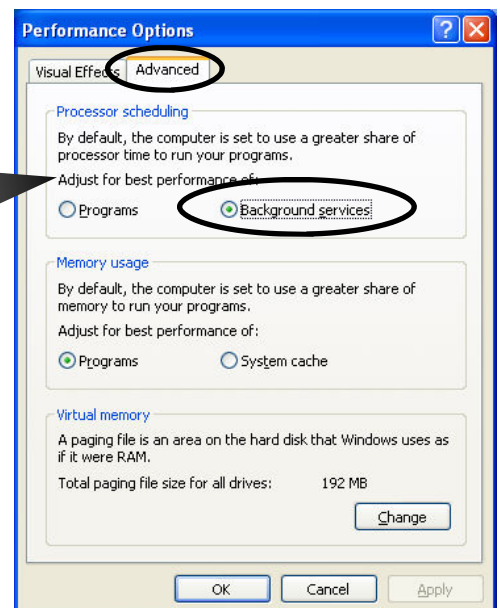


Figure 4